

SW 1/4 OF THE SW 1/4
SECTION 27, T.6N., R.2W., S.L.B. & M.

TAXING UNIT: 53, 377

IN WEBER COUNTY

SCALE 1" = 100'

SEE PAGE 76

CENTRAL WEBER SEWER IMP DISTRICT E#2305747 BOUNDARY LINE AGRMT

FREDRICKSON SUB
P. 454

THE FREDRICKSON FAMILY TRUST
11/JULY/2001
150760139
7.475 AC±
TU:377

E#2305748 BOUNDARY LINE AGRMT 1320' CENTRAL WEBER SEWER IMP DISTRICT 660'

BLAINE H ATKINSON & ELAINE B
ATKINSON TRUSTEES
150760141
6.43 AC±
(NOT INC. ROAD)
TU: 377

JEFFREY L ATKINSON
& WF SHIRLEY S
150760093
1.12 AC± TU:377
C.W.S.I.D.

LINDA A RHOADS
LINDA RHOADS
150760078
1.12 AC±
TU:53

DISTRICT
MICHAEL B ATKINSON
& WF M NEDRA
150760061
1.26 AC±
TU: 377

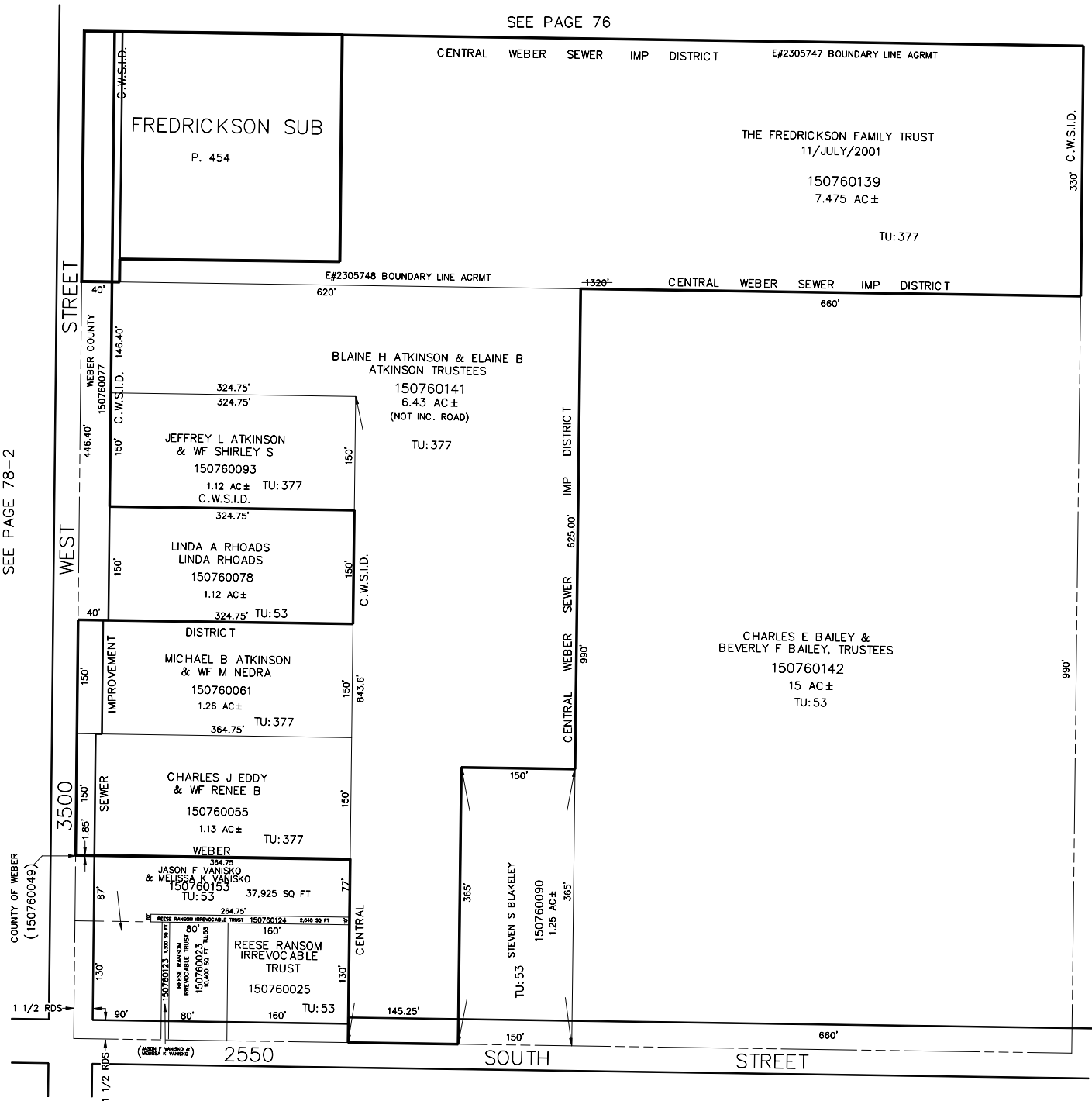
CHARLES J EDDY
& WF RENEE B
150760055
1.13 AC±
TU:377

JASON F VANISKO
& MELISSA K VANISKO
150760153
37,925 SQ FT
TU: 53

REESE RANSOM
IRREVOCABLE TRUST
150760025
10,400 SQ FT
TU: 53

CHARLES E BAILEY &
BEVERLY F BAILEY, TRUSTEES
150760142
15 AC±
TU: 53

STEVEN S BLAKELEY
150760090
1.25 AC±
TU: 53



SEE PAGE 78-2

SEE PAGE 76

COUNTY OF WEBER
(150760049)

1 1/2 POS

1 1/2 POS

SEE PAGE 92